



IκB-β (phospho Ser23) Polyclonal Antibody

Catalog No	YP-Ab-01255
Isotype	IgG
Reactivity	Human;Mouse;Rat
Applications	WB;IHC;IF;ELISA
Gene Name	NFKBIB
Protein Name	NF-kappa-B inhibitor beta
Immunogen	The antiserum was produced against synthesized peptide derived from human IκappaB-beta around the phosphorylation site of Ser23. AA range:8-57
Specificity	Phospho-IκB-β (S23) Polyclonal Antibody detects endogenous levels of IκB-β protein only when phosphorylated at S23.
Formulation	Liquid in PBS containing 50% glycerol, 0.5% BSA and 0.02% sodium azide.
Source	Polyclonal, Rabbit,IgG
Purification	The antibody was affinity-purified from rabbit antiserum by affinity-chromatography using epitope-specific immunogen.
Dilution	Western Blot: 1/500 - 1/2000. Immunohistochemistry: 1/100 - 1/300. Immunofluorescence: 1/200 - 1/1000. ELISA: 1/40000. Not yet tested in other applications.
Concentration	1 mg/ml
Purity	≥90%
Storage Stability	-20°C/1 year
Synonyms	NFKBIB; IKBB; TRIP9; NF-kappa-B inhibitor beta; NF-kappa-BIB; I-kappa-B-beta; IκB-B; IκB-beta; IκappaBbeta; Thyroid receptor-interacting protein 9; TR-interacting protein 9; TRIP-9
Observed Band	37kD
Cell Pathway	Cytoplasm . Nucleus .
Tissue Specificity	Expressed in all tissues examined.
Function	function:Inhibits NF-kappa-B by complexing with and trapping it in the cytoplasm. However, the unphosphorylated form resynthesized after cell stimulation is able to bind NF-kappa-B allowing its transport to the nucleus and protecting it to further IκBA-dependent inactivation. Association with inhibitor kappa B-interacting NKIRAS1 and NKIRAS2 prevent its phosphorylation rendering it more resistant to degradation, explaining its slower degradation.,PTM:Phosphorylated; followed by degradation. Interaction with NKIRAS1 and NKIRAS2 probably prevents phosphorylation.,similarity:Belongs to the NF-kappa-B inhibitor family.,similarity:Contains 6 ANK repeats.,subunit:Interacts with THRB (via ligand-binding domain). Interacts with RELA and REL. Interacts with COMMD1 and inhibitor kappa B-interacting Ras-like NKIRAS1 and NKIRAS2.,tissue



specificity:Expressed in all tissues examined.,

Background

The protein encoded by this gene belongs to the NF-kappa-B inhibitor family, which inhibit NF-kappa-B by complexing with, and trapping it in the cytoplasm. Phosphorylation of serine residues on these proteins by kinases marks them for destruction via the ubiquitination pathway, thereby allowing activation of the NF-kappa-B, which translocates to the nucleus to function as a transcription factor. Alternatively spliced transcript variants have been found for this gene.[provided by RefSeq, Jul 2011],

matters needing attention

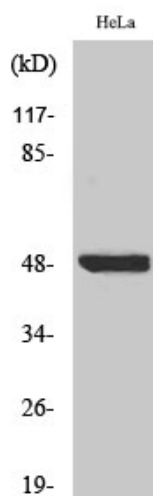
Avoid repeated freezing and thawing!

Usage suggestions

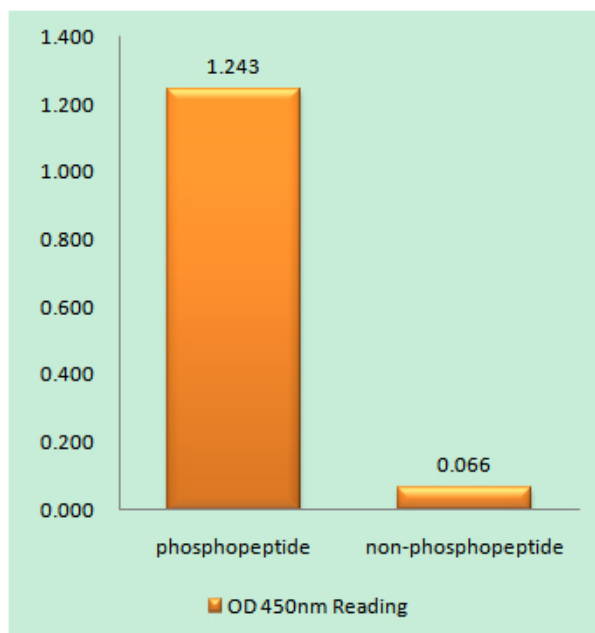
This product can be used in immunological reaction related experiments. For more information, please consult technical personnel.



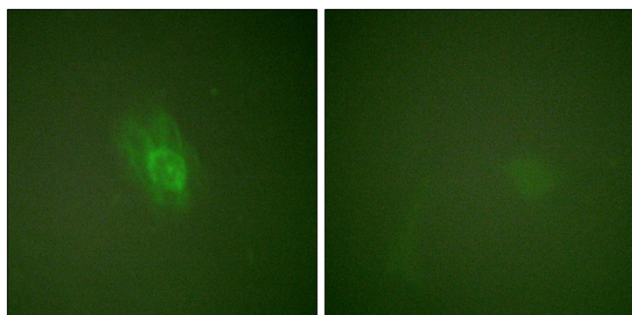
Products Images



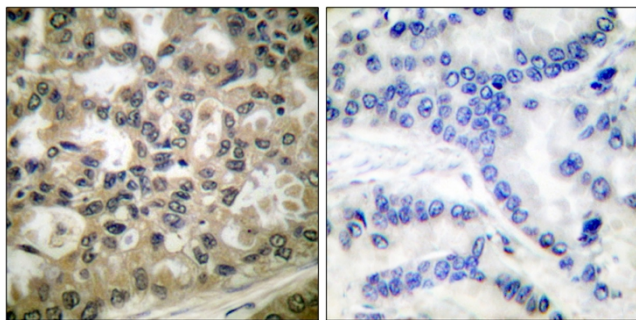
Western Blot analysis of various cells using Phospho-IkappaB-beta (S23) Polyclonal Antibody



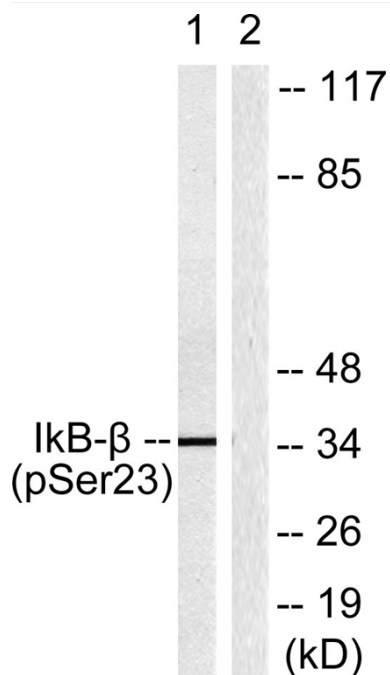
Enzyme-Linked Immunosorbent Assay (Phospho-ELISA) for Immunogen Phosphopeptide (Phospho-left) and Non-Phosphopeptide (Phospho-right), using IkappaB-beta (Phospho-Ser23) Antibody



Immunofluorescence analysis of HeLa cells treated with TNF-a 20nM 15', using IkappaB-beta (Phospho-Ser23) Antibody. The picture on the right is blocked with the phospho peptide.



Immunohistochemistry analysis of paraffin-embedded human lung carcinoma, using IkappaB-beta (Phospho-Ser23) Antibody. The picture on the right is blocked with the phospho peptide.



Western blot analysis of lysates from HeLa cells treated with TNF-a 20ng/ml 5', using IkappaB-beta (Phospho-Ser23) Antibody. The lane on the right is blocked with the phospho peptide.